

# INSPIRED HOME

MARCH \* APRIL 2018

Art,  
Design  
&  
Architecture

A FRESH APPROACH TO HOME & LIFE



Sunlight bathes the main living spaces of Radiant Home's new model home. A classic design mixed with contemporary elements, this home boasts an exceptional floorplan for today's modern family.

## A Detailed "Model" for Success

*Radiant Homes designs a model home  
for today's homeowner.*

BY WANDA M. PERKINS | PHOTOGRAPHY BY TRAVIS BEAUCHE, STUDIO THREE BEAU

Located against a wooded backdrop in Edgewood Estates, Radiant Home's first model home melds architectural craftsmanship and design with distinctive materials. "This is our first speculative project, the first time we have designed and built a home without a client in mind," notes David Reid, president of Radiant Homes. "It felt somewhat freeing, like we were doing it just for us, while at the same time we felt the responsibility of appealing to every potential buyer."

When asked to classify the home's style, Reid reflectively labels it "transitional." He describes this as the marrying of classic and contemporary design elements, the familiarity and comfort of traditional design, paired with the crisp, clean lines and cool tonality of contemporary design. Highly efficient and functional, the home showcases a floorplan for today's modern family.

The exterior features a synthetic stucco-arched entrance with a cedar ceiling and dramatic copper gas lantern. Cedar gable vents on the front elevation and black windows

with custom steel corbels add to the home's striking curb appeal, which is complemented by a black standing-seam metal roof.

Reid indicates that the foundation of success for each project is Radiant Home's entire team. This project included the creative talents of architect Scott Meland, their crew of expert carpenters and interior designer Brandi Youngmark. "Scott is masterfully adept at generating creative, unique designs," Reid recalls. "Our team of carpenters and managers worked tirelessly under a tight deadline to complete the build, and Brandi played an integral role conveying a cohesive vision for simplicity of classic elements with a contemporary twist."

Built in 2017, the 4,250-square-foot home includes six bedrooms and five baths. Inviting, wooded views beyond the living and dining rooms welcome guests. A gas fireplace, topped with a reclaimed Douglas fir hearth and mantle against a custom veneer plaster wall finish, is an attractive focal point to the home's main living areas.



↓ Relaxing by the fire in the living room, homeowners will delight in wooded views and the easy flow into dining and kitchen spaces.

↓ David Reid, president of Radiant Homes





All the details come together in the kitchen with a centralized island and highly functional cooking space. Shiplap frames the range hood against a striking veined quartz backsplash.



Inviting and welcoming, the home's entryway transitions flawlessly into main living areas.



Dark grey quartz on the Island is complemented with black pendant lighting, custom metal Island framing and crisp white cabinetry, truly artistic distinction.

The kitchen utilizes black metal accents as evidenced in pendant lighting and custom steel island framing. Shiplap around the range hood and black stainless appliances are beautifully offset by a full-height, veined quartz backsplash, white oak soffit paneling, white cabinetry and brushed gold hardware. Near the kitchen is a handy nook area with a built-in desk. Variegated white oak floors throughout the home's main level add natural

← Located behind the kitchen, a convenient walk-through pantry and mudroom keeps clutter contained and extra supplies handy.

↘ A delightful nook area with a desk just off the kitchen helps homeowners stay organized.



*“I believe the end product is much more gratifying when the journey to arrive there has been enjoyable.”*

David Reid, president of Radiant Homes



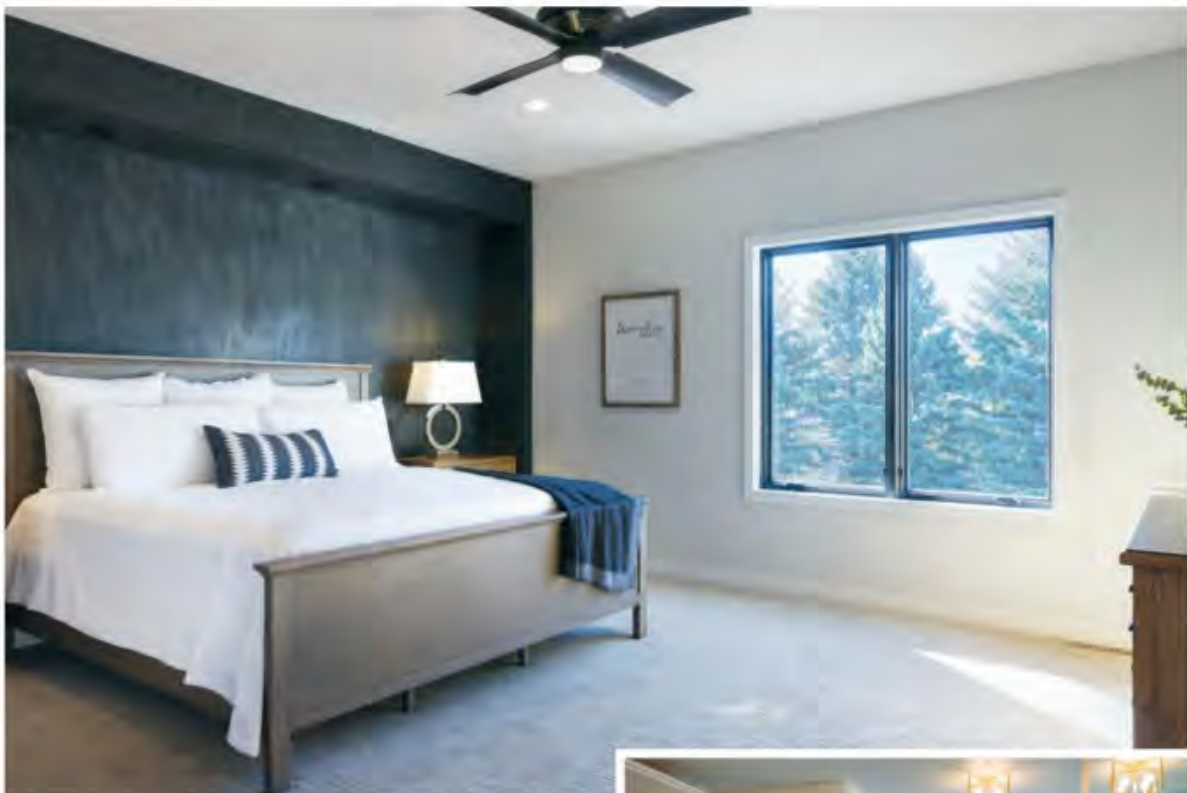
Views from the living room shows an easy flow into the kitchen, upper and lower floors and entrance.



↑ An office space bridges simplicity with elegance by featuring a dark navy blue wood wall.



↑ Just past the entryway, a white staircase and warm variegated white oak flooring reflect the home's superb craftsmanship.



↑ In the master bedroom, a black custom veneer plaster wall finish provides a dramatic backdrop for the bed. Abundant natural lighting and tranquil evergreen views are exquisite.

→ A spa-like master bath offers all the elegance and amenities homeowners desire.

warmth to the cool, understated wall coloring, clean trim detailing and contemporary cabinetry.

When designing a new home or remodeling an existing home, Youngmark explains there are many details to be generated and decisions to be made throughout the process, many of which the homeowner might not be aware of. "Discovering project goals such as budget, functionality and design priorities, while defining building products and finish materials at the outset, sets the project up for success and helps ensure the vision will be achieved," she adds.

And this home's design anticipates all the important details! Entering from the garage leads into a dual purpose mudroom/pantry galley. "I love the concept of the walk-through pantry and mudroom located on the back side of the kitchen. It's a charming space with a very functional and convenient flow," Reid adds.

→ Designed with double vanities, and a make-up area too, the luxurious master bath was creatively planned to pamper homeowners.





↑ Sure to be admired for years to come, the home's front exterior is stunning with a mix of architecturally pleasing components.

← A stucco arched entrance showcases a remarkable cedar ceiling and copper gas lantern.



Second-story windows spill natural light upon the white staircase with a curved half-wall at the landing. Upstairs, the master suite offers serene outdoor views with a spacious walk-in closet and bath. Textured rift-cut oak cabinets, quartz countertops, heated tile flooring, and a glass shower and soaking tub combine all the must-have amenities. Two guest bedrooms, an additional bath, plus a guest suite with vaulted ceilings complete the second-story space.

Downstairs, another bedroom suite, cozy family room and a wine room behind sliding barn doors creates extra living space. A tiered, leathered granite bar with white oak shiplap, brass cage pendants, a stylish chrome faucet and open shelving provides a gathering spot for entertaining.

An impressive technology system within the home can be controlled from a smart phone or tablet. This system includes video monitoring via security cameras, distributed audio throughout the home, and an advanced home network system that allows the thermostat to be remotely monitored and adjusted.

Abiding to a high standard of excellence in construction methods and materials, Radiant Homes provides a refreshingly responsive, informative and transparent approach to sustaining a positive, customer-focused experience. "I'm inspired by the fact that every project is a clean slate, a new challenge to design and craft something fresh and unique that reflects our client's palate and lifestyle," Reid concludes. "I believe the end product is much more gratifying when the journey to arrive there has been enjoyable." ✨





↑ The backside view of the home's exterior is equally eye-catching with interesting rooflines and wrap-around dining room windows.

## Design Thoughts



Interior Designer | Brandi Youngmark,  
Brandi Youngmark Interior Design

*“Discovering project goals such as budget, functionality and design priorities, while defining building products and finish materials at the outset, sets the project up for success and helps ensure the vision will be achieved.”*

*Brandi Youngmark*

**Contractor:** David Reid, Radiant Homes | **Architect:** Scott Meland, Meland Architects  
**Interior Designer:** Brandi Youngmark, Brandi Youngmark Interior Design  
**Braaten Cabinets:** Designer, Kristi Foell | **Home Technology:** Smart Home Technologies, Jamie DeJean | **Appliances:** Rigel's | **Framing & Finish Carpentry:** Radiant Homes  
**HVAC and Plumbing:** Home Heating Plumbing & Air Conditioning | **Fireplace:** Home and Hearth | **Windows:** Pella | **Concrete:** Opatril Concrete Construction | **Home Staging:** Eco Chic Boutique | **Custom Metal Fabrication, island surround, exterior corbels:** Straightline Design | **Garage Doors:** EZ Open Garage Door | **Plumbing and Lighting Fixtures:** Ferguson Enterprises | **Shower Glass and Mirrors:** Red River Glazing  
**Countertops:** Great Northern Granite | **Flooring:** Carpet World & Design Direction  
**Millwork:** Simonson Lumber