



“This modern lake home utilizes exposed ductwork and exposed concrete floors combined with geometric lines.”

~ Dave Berdal, Radiant Homes project manager



Industrial Distinction in Simplicity and Design

Pelican Lake home gives neutrality a splash of delightful color.

BY WANDA M. PERKINS | PHOTOGRAPHY BY JILL OCKHARDT BLAUFUSS

Located on the picturesque shores of Pelican Lake, Robert and Robin Flurer's lake home is a perfect blend of family preference, modern simplicity, striking design and vibrant color. The lot, which was once lake access to an existing farm, now features an extraordinary 2,278-square-foot, two-story home that awakens its lakeside setting.

"Robert and I prefer a simple look with natural elements and a splash of color," Robin says. "We chose orange, green and natural colors to highlight the industrial modern design that we desired."

Construction of their three-bedroom, four-bath home began in November 2014 and was completed in July 2015. "This modern lake home utilizes exposed ductwork and exposed concrete floors combined with geometric lines," explains Dave Berdal, Radiant Homes project manager. "A contrasting



Custom wall pendants mounted above kitchen cabinetry lend interest and industrial flair.

galvanized metal roof complements the dark paint scheme, composite decking system, unique lakeside aluminum shade structure and colorful landscaping.”

From the roadside, a bright green Pella entry door with a black frame lends an inviting appearance. Dramatic dark charcoal James Hardie lap siding and vertical siding with batten strips and trim showcase beautiful Pella windows.

The couple especially appreciates how the windows frame scenic lake views. Eye-catching birch ceilings and wall panels offset crisp white walls and trim work. A polished gray concrete floor on the main level was designed with radiant floor heat and grouted joints for carefree lake living.

Open to the great room, with its captivating 22-foot ceiling and wood-burning Heatilator Birmingham fireplace, the kitchen and dining room offer a cheery space for family and guests. Energizing lime green accents in the kitchen match a GE custom-painted refrigerator and entrance doors. Maple cabinetry and trim with stainless steel appliances complement the colorful space.

Robert and Robin salvaged a couple of the home’s light fixtures from a completed commercial electrical project. Fixtures have a galvanized finish with recycled gym lighting suspended over the dining table. “We purchased a dining room table that easily converts into a pool table,” Robert notes. “It’s a fun indoor activity for family, especially when the weather doesn’t cooperate.”



↑ Unique, neutral circle chairs in the sunroom are accented by a whimsical lime green shag rug. Overhead, industrial lighting and wall sconces create a lively, attention-catching space.



↑ A sofa is enhanced by a striped water ski, which coordinates with pillows and an orange throw. Massive windows welcome outdoor views inside.



↑ Views from the second floor showcase gym lighting and an open layout with fabulous views of Pelican Lake.

↑ → The couple purchased a modern dining room table, which easily converts into a pool table page 34.





↑ Floor-to-ceiling windows provide lake views from any room or comfortable spot in the Flurers' home.

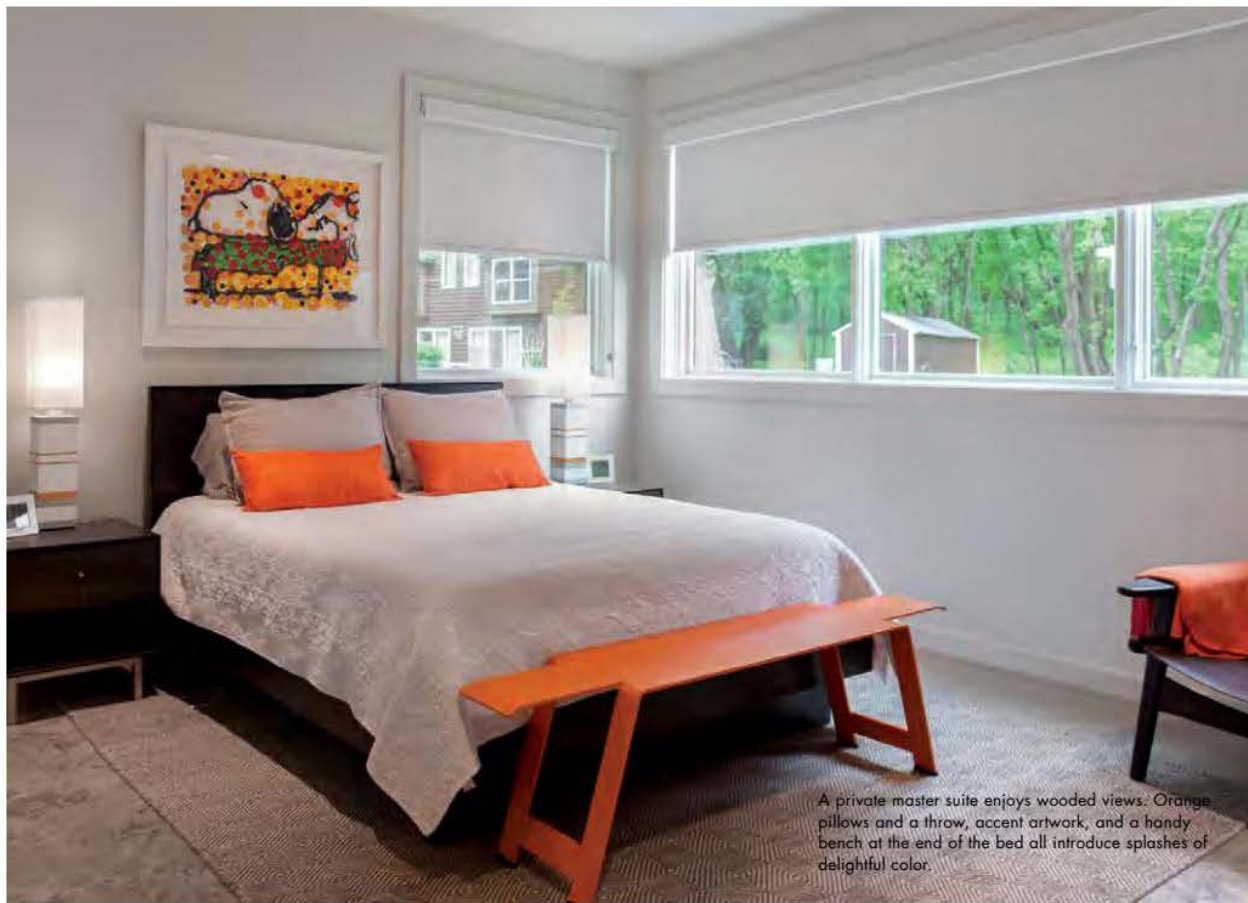


↑ The entryway invites abundant natural lighting. A convenient, cheery orange bench is positioned near a lime green entry door.

Tile accents and mirrored walls in the main floor master bathroom reflect color as well. A Duravit soaking tub and aquatic shower enclosure create a spa-like bath experience. The couple's master bedroom boasts a lovely woodland view.

Outdoors, Corten steel planters rust naturally, enhancing orange hues and an industrial feel. Soft, tall grasses boarder planters.

With two grown sons—Zac (and wife Chelsea and their 2-year-old son, Dillon) and Drew (and wife Rachel)—lake time is a cherished time for the Flurers. “We love special family activities together and evening walks,” concludes Robin. “Robert also enjoys golfing, and I like workouts and reading. To us, home is a place for family and friends to spend time together, to relax and enjoy life.” ✨



A private master suite enjoys wooded views. Orange pillows and a throw, accent artwork, and a handy bench at the end of the bed all introduce splashes of delightful color.



↑ The roadside entrance features a cedar wind screen and Corten planter.



↑ A lakeside hammock and patio area beckons guests and family to relax and kick off their shoes



Outdoor patio planters that rust naturally contain grasses to enjoy year after year.

DESIGN THOUGHTS...



↑ Robert and Robin Flurer

The Flurers' lake home features a simple design that uses attention-catching colors, highlighted on bright green entrance and lakeside doors, interior accent walls and a custom-painted refrigerator. Interior birch-veneered plywood featured on the ceiling and wall panels in the sunroom with board-formed concrete tile on the fireplace. A main floor master suite and two second floor bedroom suites provide generous sleeping spaces for family and guests. As the builder, working with Robert and Robin on this delightful home was a wonderful opportunity.

Dave Berdal, project manager
Radiant Homes

CONTRIBUTORS...

Architect: Chris Hawley | Concrete: Opatril Concrete Construction | Ornamental Iron: Straight Line Design | Trim Carpentry: Radiant and Luxury Builders | Tile installation/ Fireplace: Jacobson Tile and Stone | Cabinets: Luxury Design Countertops: Northern Stone | HVAC / Plumbing / Radiant Floors: Home Heating and Plumbing | Landscaping: Lakes Area Landscaping | Plumbing Fixtures and Appliances: Ferguson Bath, Kitchen & Lighting Gallery | Tile and Flooring: Carpet World | Gutters: All New Gutters/Western Products | Electrical: Gary Fritz Electric | Fireplace: Home and Hearth